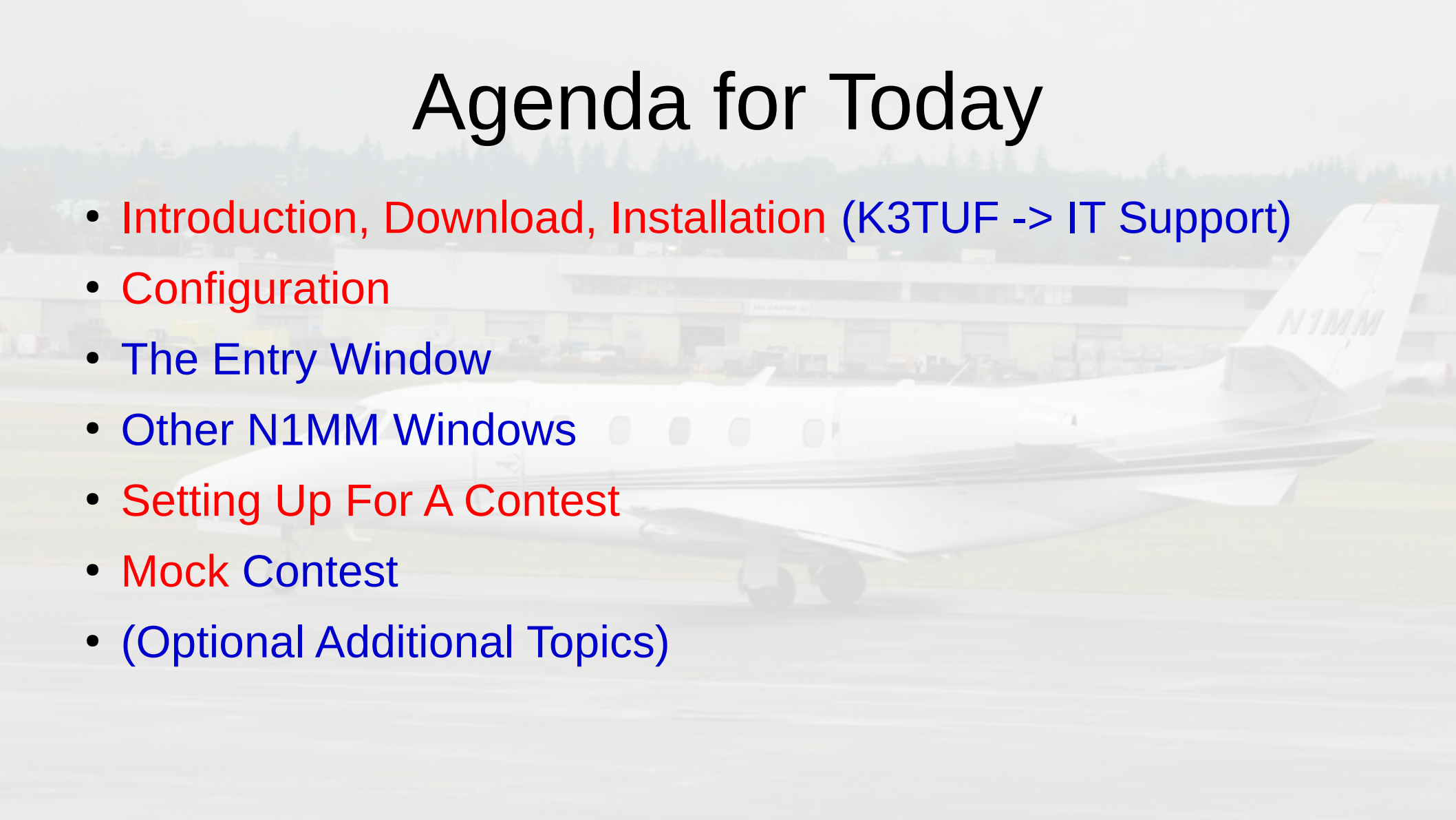


N1MM for Beginners

W3SZ and K3TUF



Agenda for Today

- Introduction, Download, Installation (K3TUF -> IT Support)
 - Configuration
 - The Entry Window
 - Other N1MM Windows
 - Setting Up For A Contest
 - Mock Contest
 - (Optional Additional Topics)
- 
- A white twin-engine aircraft, likely a Cessna 441, is parked on a tarmac. The tail of the aircraft features the registration number 'N1MM'. In the background, there is an airport terminal building with several hangars and a line of trees under a clear sky.

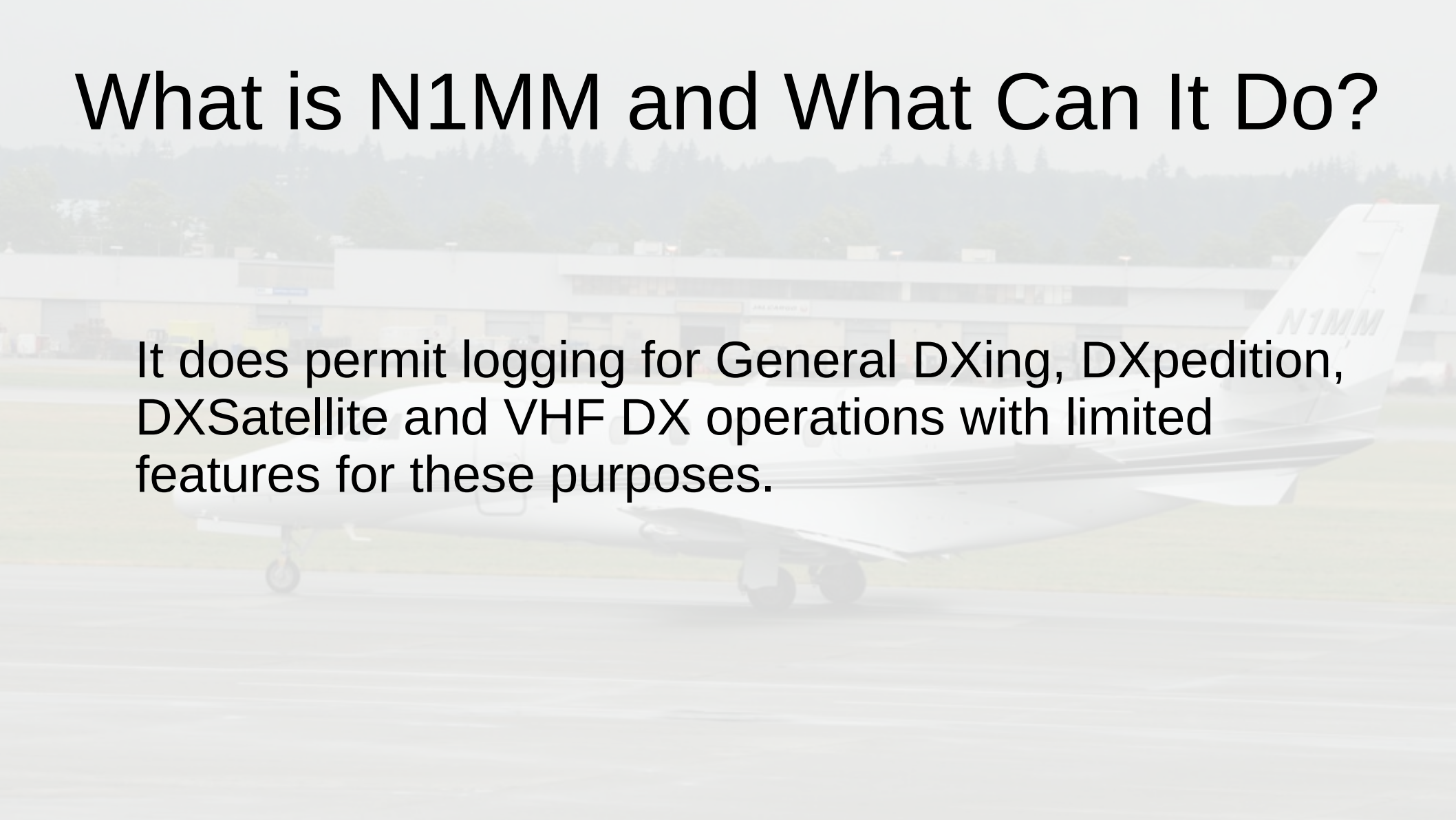
What is N1MM and What Can It Do?

- World's most popular CONTEST logging program
- For CW, phone, digital modes, its combination of contest-optimized features is unmatched

“N1MM+ is not a general-purpose logger; there is no support for chasing awards like DXCC and WAS, and there are no QSL management features. For those functions, you should be using a general logging program”.

What is N1MM and What Can It Do?

It does permit logging for General DXing, DXpedition, DXSatellite and VHF DX operations with limited features for these purposes.

A white airplane is parked on a runway. The tail of the airplane has the call sign 'N1MM' written on it. In the background, there is a large hangar and a line of trees under a clear sky.

What is N1MM and What Can It Do?

- Major VHF contests are supported
- Provides excellent support for VHF and up contesting, including transverter support
- SHF bands supported up to and including 241 GHz
- Supports Rover operations
- Provides excellent Digital support. Will provide automatic logging of WSJTX contacts when those contacts are logged in WSJTX.

What is N1MM and What Can It Do?

- Provides automatic beam heading support and rotator control via N1MM Rotor, PSTRotorAZ, or ARSWIN
- Has Integrated Telnet/DXCluster support
- Uses sound card for DVK (Digital Voice Keyer), but also has interface for W9XT, other hardware DVKs
- Provides automatic CW generation using LPT and USB ports

What is N1MM and What Can It Do?

- Single operator can do simple single operator mode, or SO2V (Single Operator Two VFO) mode, or SO2R (Single Operator Two Radio) mode
- Supports microHAM, OTRSP SO2R protocols
- Provides legacy LPT support for old systems (XP/Vista/Windows 7) for antenna selection, radio selection, PTT
- Supports multi-user multi-computer networked logging (Multi-Op support)

A Brief History of N1MM Logger Plus

- Tom Wagner, N1MM, is the driving force behind N1MM Logger +
- Tom graduated from MIT in 1971
- In 2000 he began working on what has turned into N1MM Logger +
- Co-developers include N2AMG, K3CT, N2IC, KU7T, VE3KI, K8UT, N4ZR, and NA3M

A Brief History of N1MM Logger Plus

- The earlier version of the software was called “N1MM Logger” and with a major upgrade around 2014 the name was changed to “N1MM Logger +”
- The program is very actively developed, generally with an update every week, sometimes more often

Where to go for N1MM Help

- The N1MM Website:

<http://n1mm.hamdocs.com/tiki-index.php>

Documents:

Getting Started

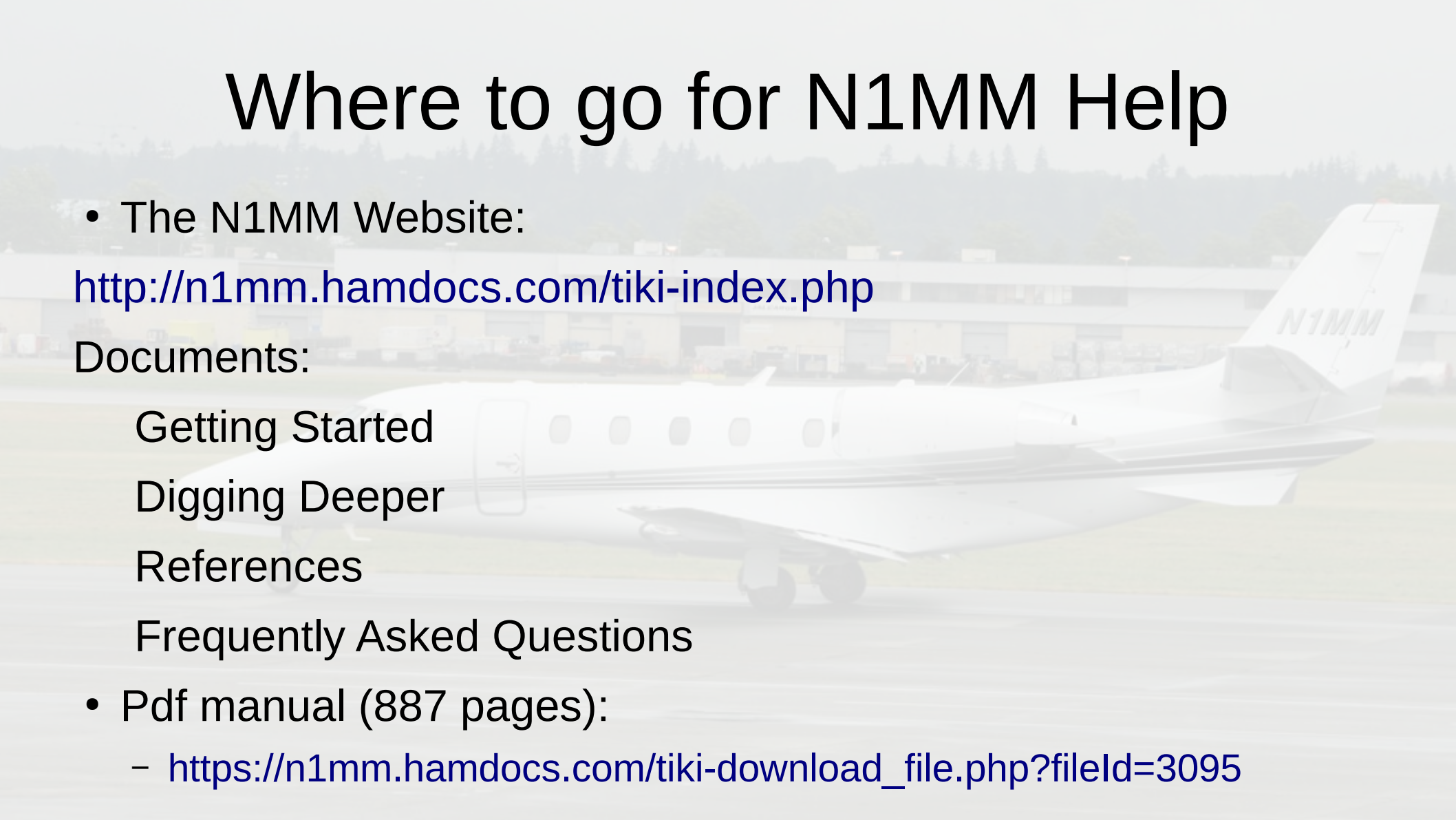
Digging Deeper

References

Frequently Asked Questions

- Pdf manual (887 pages):

– https://n1mm.hamdocs.com/tiki-download_file.php?fileId=3095



Browser address bar: <https://groups.io/g/n1mmloggerplus>

Navigation: Home, Guidelines, Messages, Hashtags

N1MM+ N1MMLoggerPlus@groups.io

Group Description

The official platform for discussing the N1MM Logger Plus contest logging program.

N1MM Logger+ (aka N1MM+) is free contesting software that supports virtually all amateur radio contests. If a contest is not supported now, it can usually be added using the Logger's "user-defined contest" feature. N1MM+ is not a general-purpose logger; there is no support for chasing awards like DXCC and WAS, and there are no QSL management features. For those functions, you should be using a general logging program. You can export contest logs from N1MM+ in ADIF format and import them into almost any general logging program for tracking awards and generating QSLs.

Group Information

- <http://n1mm.hamdocs.com>
- 3,815 Members
- 9,950 Topics, Last Post: 7:18pm
- Started on 3/21/14
- [Feed](#)

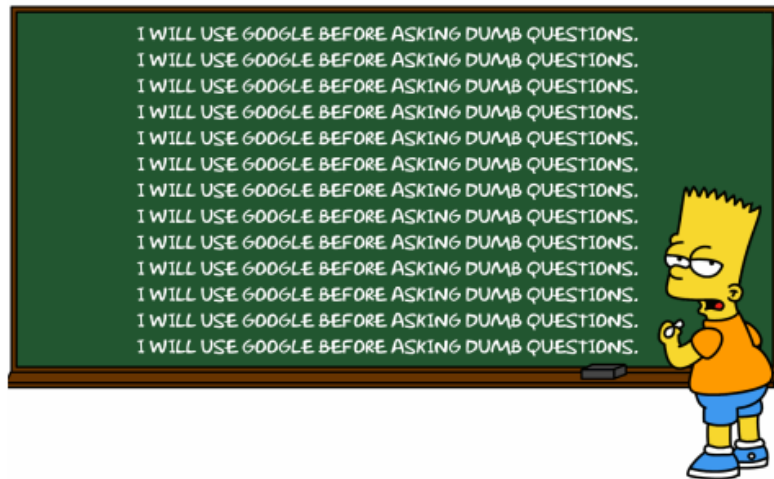
Group Settings

- All subscribers can post to the group.
- Posts to this group do not require approval from the moderators.
- Posts from new users require approval from the moderators.
- Messages are set to reply to group.
- Subscriptions to this group do not require approval from the moderators.
- Archives are visible to anyone.
- Wiki is visible to subscribers only.
- Only moderators can create hashtags.
- Members can edit their posts.
- Members can set their subscriptions to no email.





Google is your Friend, but you don't seem to understand!

 Google

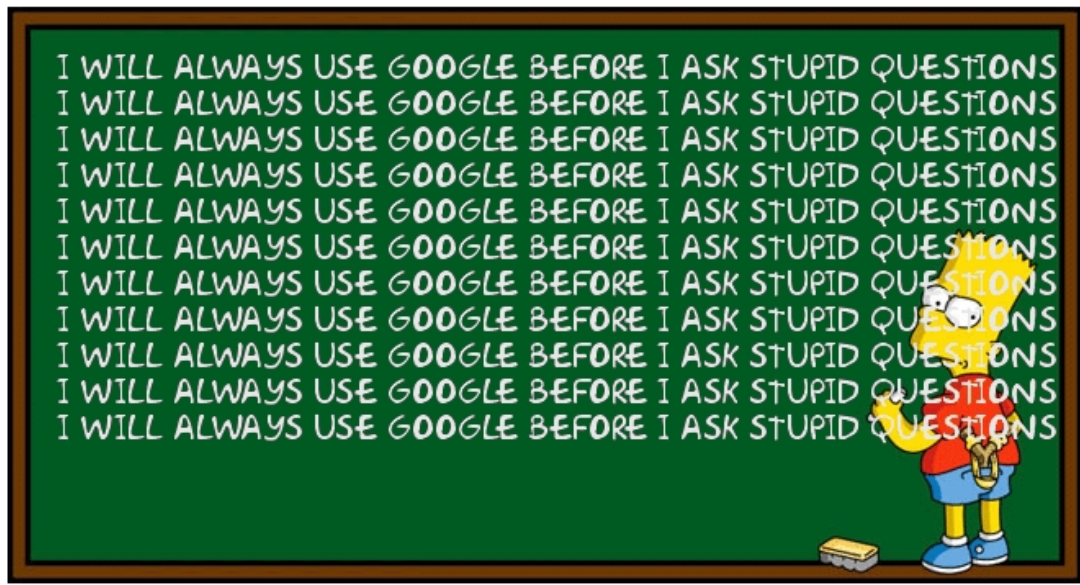
Someone thinks you're too lazy to use Google before asking a question. Now someone is tired of answering stupid questions and sent you a link to this site to point out that you can easily find the answer yourself. Please do so.

We hope it helps.

Have a wonderful day.

Google™ Is Your Best Friend ...

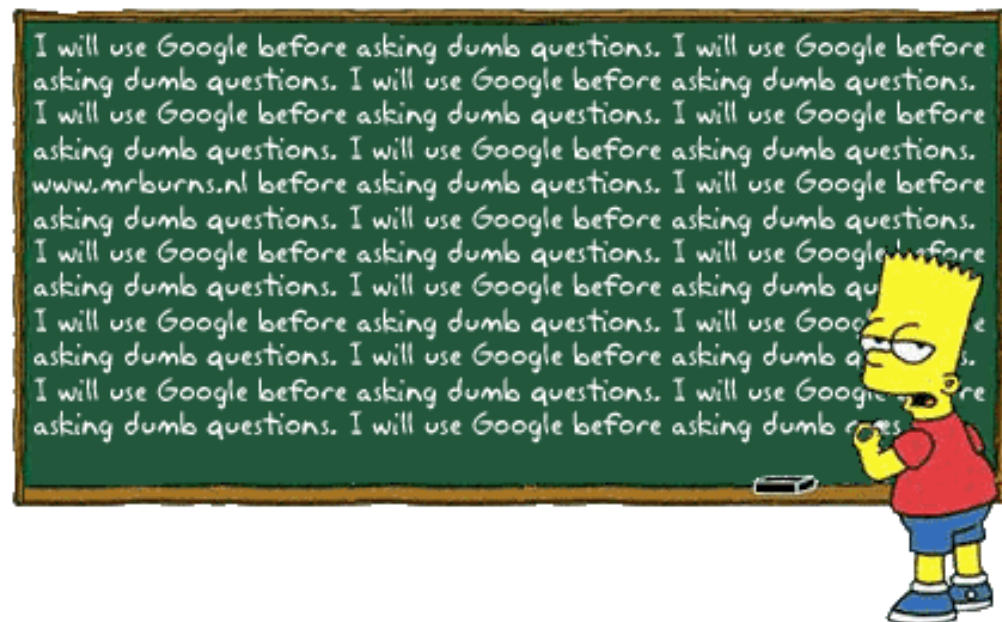
... but it seems you haven't recognized it yet!



Google Is Your Friend

All Smart People Use Google

It Appears That You Are Not One Of Them



Someone thinks you are an idiot because you were too stupid to check [Google](#) before asking a question. They gave you a link to this site as a joke. The fact that you followed it pretty much proves the point.

Hope that helps.

Have a nice day.

Today's Slides are Available at:

- w3sz.com
 - Then click on first link, “Mt. Airy VHF Radio Club (Pack Rats) – related”
 - Then scroll to “Recent Pack Rats Conference Presentations by W3SZ”
 - PDF versions of my slide sets will be there

Getting Started

- Minimum Hardware Requirements:
 - 1.6 GHz single core processor
 - at least 1024 x 768 (SVGA) - or - 1366 x 768 (720p) for wide screen monitor
 - Serial port or USB-Serial adapter for Radio Control
 - Serial port, USB-Serial adapter, parallel port or Winkey for CW keying & PTT
 - USB or parallel port for SO2R (MicroHam or OTRSP protocols)
 - THE ONLY USB-to-LPT converter that works with N1MM is PIEXX
SO2RXLAT

Getting Started

- Supported Operating Systems:

WINDOWS ONLY

- XP SP3
- Vista 32/64
- 7 32/64
- 8 32/64
- 10 32/64



Downloading the Software

- <http://n1mm.hamdocs.com/tiki-index.php?page=Downloading+the+Software&structure=N1MM+Logger+Documentation>
- The first time you download N1MM, you need to download the Full Installer
- Go to above link and Click on “Files” and then on “N1MMplus Full Install” and save the file to your hard drive.
- After you have installed N1MM you can easily update it from within the program.



Contest Logging Software

Free Software for Phone, CW, and Digital Modes

Find



Home ▾

Files ▾

Documents ▾

Hot topics ▾

Support ▾

Website ▾

N1MMplus Full Install

N1MMplus Latest Updates

N1MMplus Update History

Experimental Versions

1. Sample Function Key Files

User Defined Contests (UDC)

Call History Files

Additional Support Files

Files (list all Galleries)

2. -----

Documentation Downloads (pdf)

Documentation Translations (pdf)

3. [Configurer > Digital Modes Tab](#)

3.1. Digital Modes Field Descriptions

4. [Configurer > Other Tab](#)

4.1. Other Tab Field descriptions

5. [Configurer > Winkey Tab](#)

Configuration > Configurer



Contest Logging Software

Free Software for Phone, CW, and Digital Modes

Find



Home ▾

Files ▾

Documents ▾

Hot Topics ▾

Support ▾

Website ▾

N1MM Logger Plus Full Install

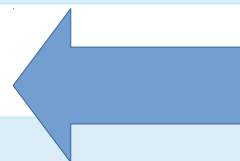
i New to N1MM?

Installing N1MM Logger+ for the first time is a two-step process. You must first download and run the Full Install (sometimes also referred to as the Base Install), followed by downloading and running the Latest Update. Each latest update includes significant upgrades, but unless you do the Full Install, subsequent updates will not have all the files they need to operate properly. **After performing the Full Install, DO NOT launch the program. Proceed directly to downloading and running the Latest Update (>Files >Latest Update) installer before using the program.**

To Download the Full Install program, [CLICK HERE TO DOWNLOAD FULL INSTALLER](#)

i Just starting with N1MM+?

We **strongly encourage** you to join the N1MMLoggerplus Groups.IO email reflector. [Click here to join the N1MMLoggerPlus Reflector](#)





Contest Logging Software

Free Software for Phone, CW, and Digital Modes

Find

Home ▾

Files ▾

Documents ▾

Hot Topics ▾

Support ▾



Website ▾

N1MMplus Full Install [?](#)

NOTE: If you are already running a version of N1MM Plus with the same first number as the file listed here, you DO NOT need to download a newer Full Install if only the second number has changed.

EXAMPLE: You are running version 1.0.3456, and the latest version here under Full Install is version 1.0.4567. In that case, you do not need a new Full Install, but only need to download a new Latest Update.

[File Galleries](#) > [N1MMplus Full Install](#)

Filename [▲]	Description	Size	Last modified	Files	Hits	↓ ¹ / ₉
 N1MM Logger+ FullInstaller 1.0.7182.exe	Full Installer. Required for new installs. The program will prompt if there is a later version available.	8.46 MB	29 May 2018		334247	

Save As

← → ↑ ↓ > This PC > Downloads

Search Downloads

Organize New folder

Name	Date modified	Type	Size
DrzTrackInstall_503.exe	9/27/2018 12:26 AM	Application	802 KB
N1MM Logger+ Update 1.0.7283_ARRL10GHZ (1).exe	9/19/2018 11:09 PM	Application	4,111 KB
N1MM Logger+ Update 1.0.7283_ARRL10GHZ.exe	9/18/2018 8:51 PM	Application	4,107 KB
Composer-Setup.exe	9/17/2018 11:43 PM	Application	748 KB
N1MM Logger+ Update 1.0.7268_ARRL10GHZ.exe	9/17/2018 10:44 AM	Application	4,101 KB
AutoHotkey_1.1.30.00_setup.exe	8/23/2018 1:43 AM	Application	3,100 KB
JBidwatcher-2.99pre5-Installer.exe	8/17/2018 2:14 AM	Application	56,768 KB
npcap-0.99-r7.exe	8/15/2018 10:47 AM	Application	740 KB
InstallSQLiteStudio-3.2.1.exe	8/7/2018 12:01 PM	Application	34,046 KB
SQLiteExpertProSetup64 (1).exe	8/6/2018 11:07 PM	Application	43,184 KB
SQLiteExpertProSetup64.exe	8/6/2018 7:22 PM	Application	43,184 KB
adksetup.exe	7/20/2018 12:19 PM	Application	1,695 KB
PlutoSDR-M2k-USB-Drivers.exe	7/14/2018 8:10 PM	Application	5,480 KB
qt-opensource-windows-x86-mingw492-5.5.1.exe	7/14/2018 8:52 AM	Application	1,021,476 KB
vs_community.exe	7/11/2018 12:30 AM	Application	1,182 KB
RapidEE_setup.exe	7/11/2018 12:17 AM	Application	3,485 KB
boost_1_67_0-msvc-14.1-32.exe	7/10/2018 1:39 AM	Application	228,597 KB
qt-unified-windows-x86-3.0.5-online.exe	7/10/2018 12:12 AM	Application	19,722 KB
gimp-2.10.4-setup-1.exe	7/7/2018 7:50 PM	Application	182,158 KB
wsjtx-1.9.1-win32.exe	6/30/2018 4:45 PM	Application	21,531 KB
install-tl-windows.exe	6/23/2018 6:54 PM	Application	15,120 KB
tb_free.exe	6/16/2018 11:17 PM	Application	73,001 KB
AutoHotkey_1.1.30.00	8/23/2018 1:43 AM	File folder	
sdrangel-dev-7-20-2018	7/20/2018 4:56 PM	File folder	
ManifestView	7/20/2018 12:10 PM	File folder	

File name: N1MM Logger+ FullInstaller 1.0.7182.exe

Save as type: Application

Hide Folders

Save Cancel

S

d a newer Full

eed a new Full Install,

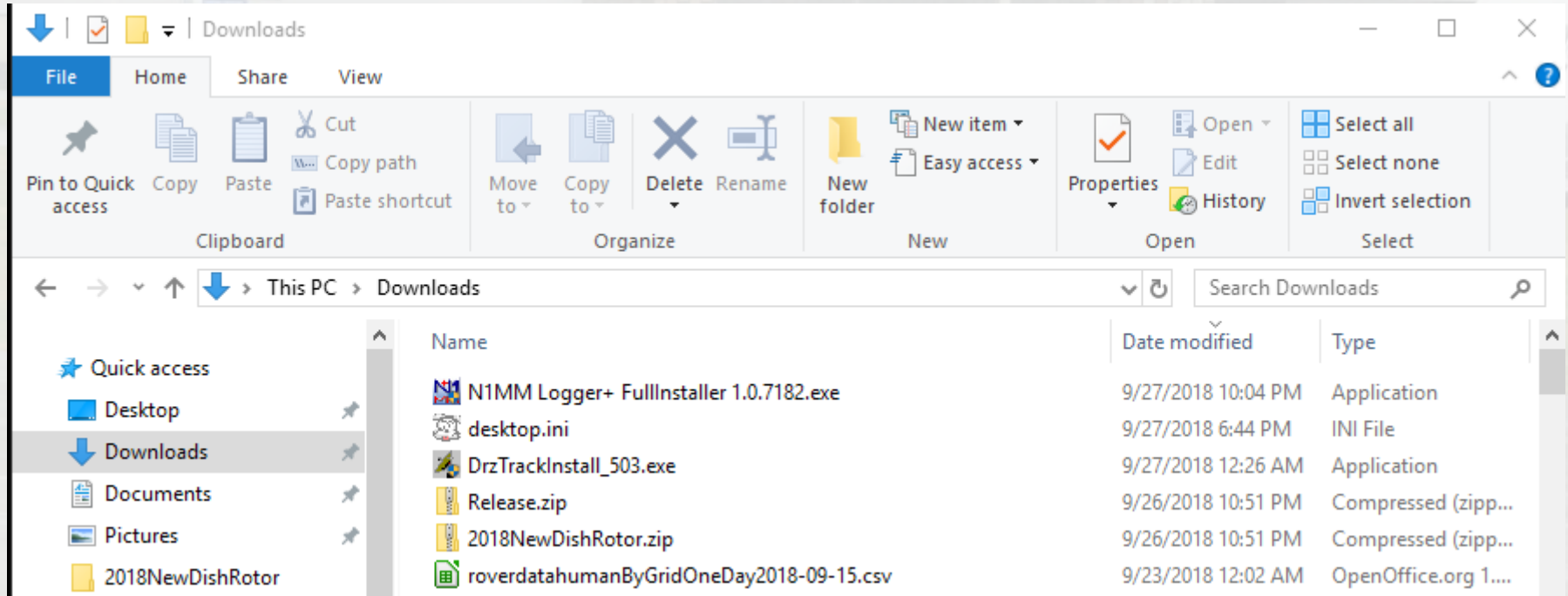
Files Hits

334247



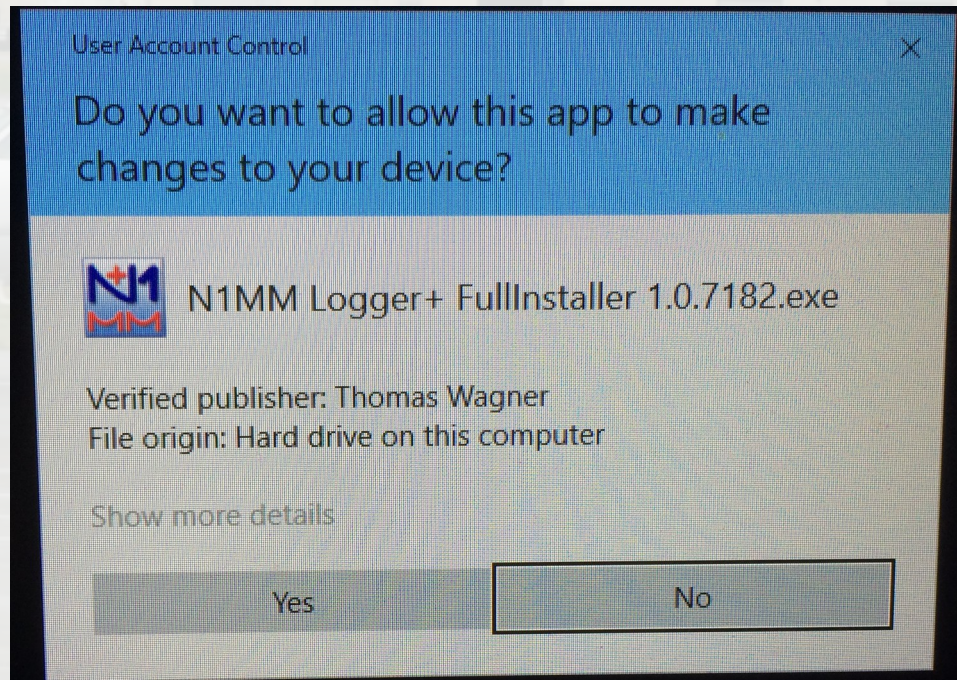
Installing the Software

- Double-click the install file that you downloaded.



Installing the Software

- Windows will ask you if you want to allow the installer to make changes – answer “Yes”.



N1MM Logger+ 0.18.3241 Setup



Welcome to N1MM Logger+ 0.18.3241 Setup

Setup will guide you through the installation of N1MM
Logger +.

It is recommended that you close all other applications
before starting Setup. Additionally, it is recommended to
reboot your computer when the installer has finished.

Click Next to continue.

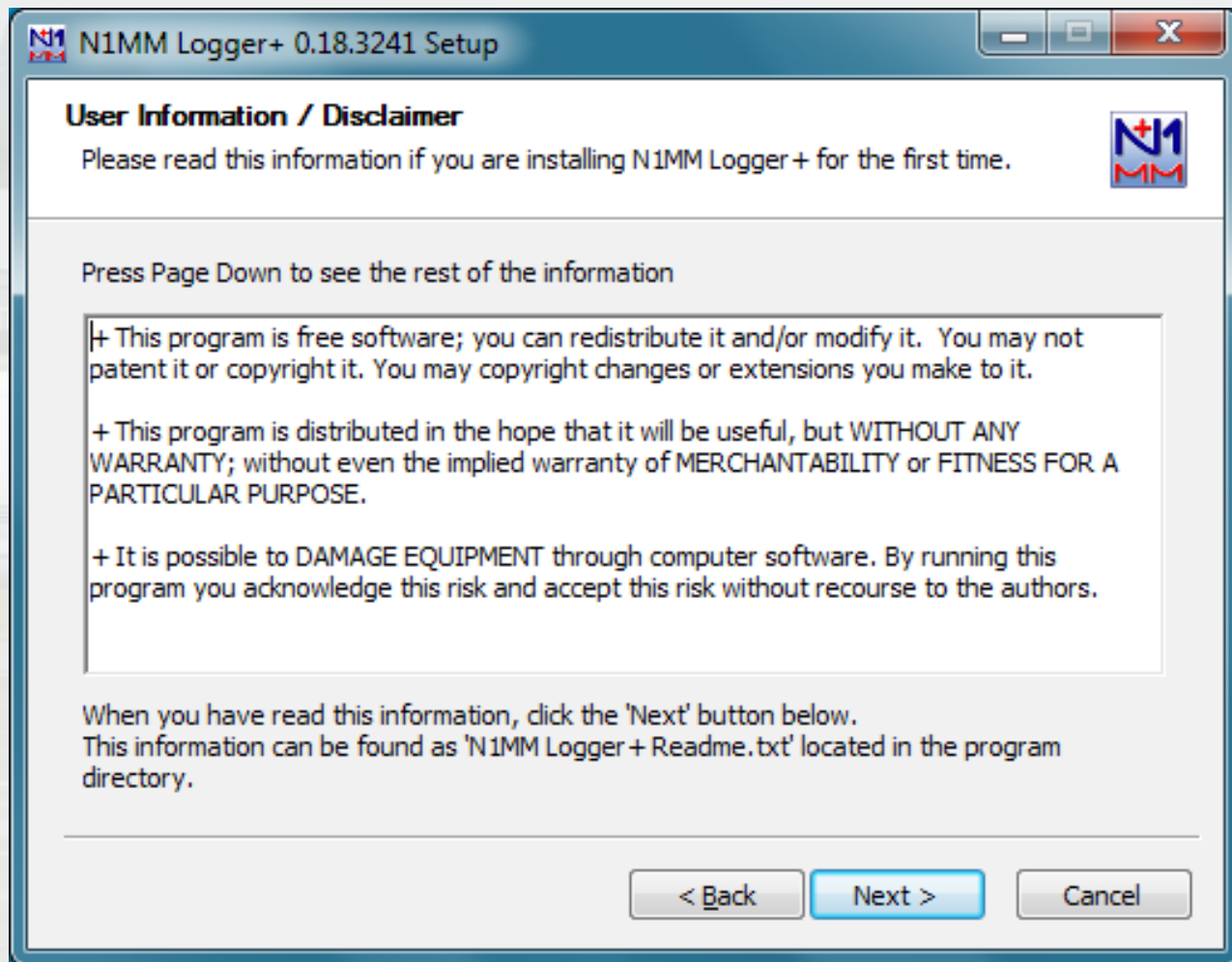
Next >

Cancel

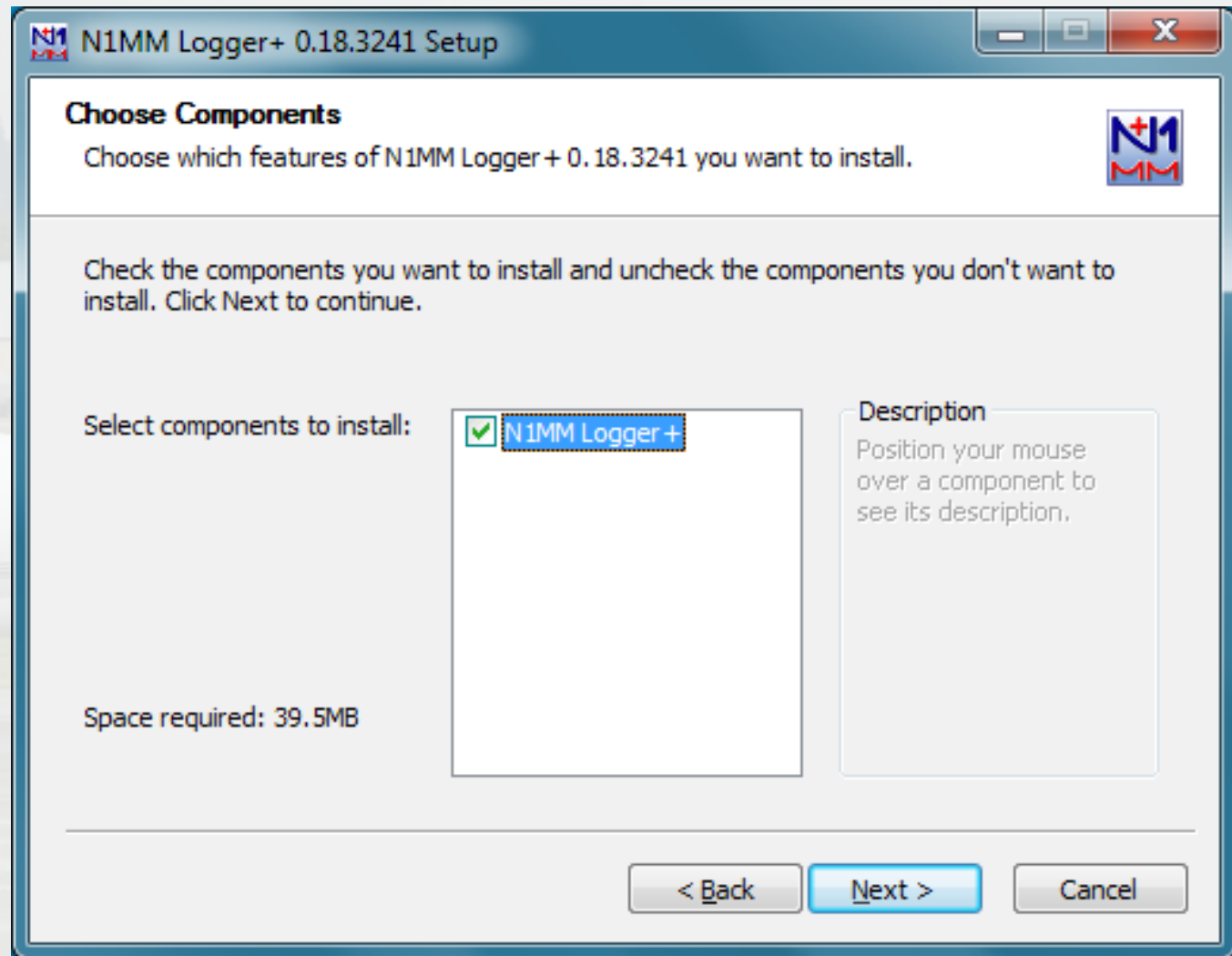
You will then
see this
window

Click on “Next”

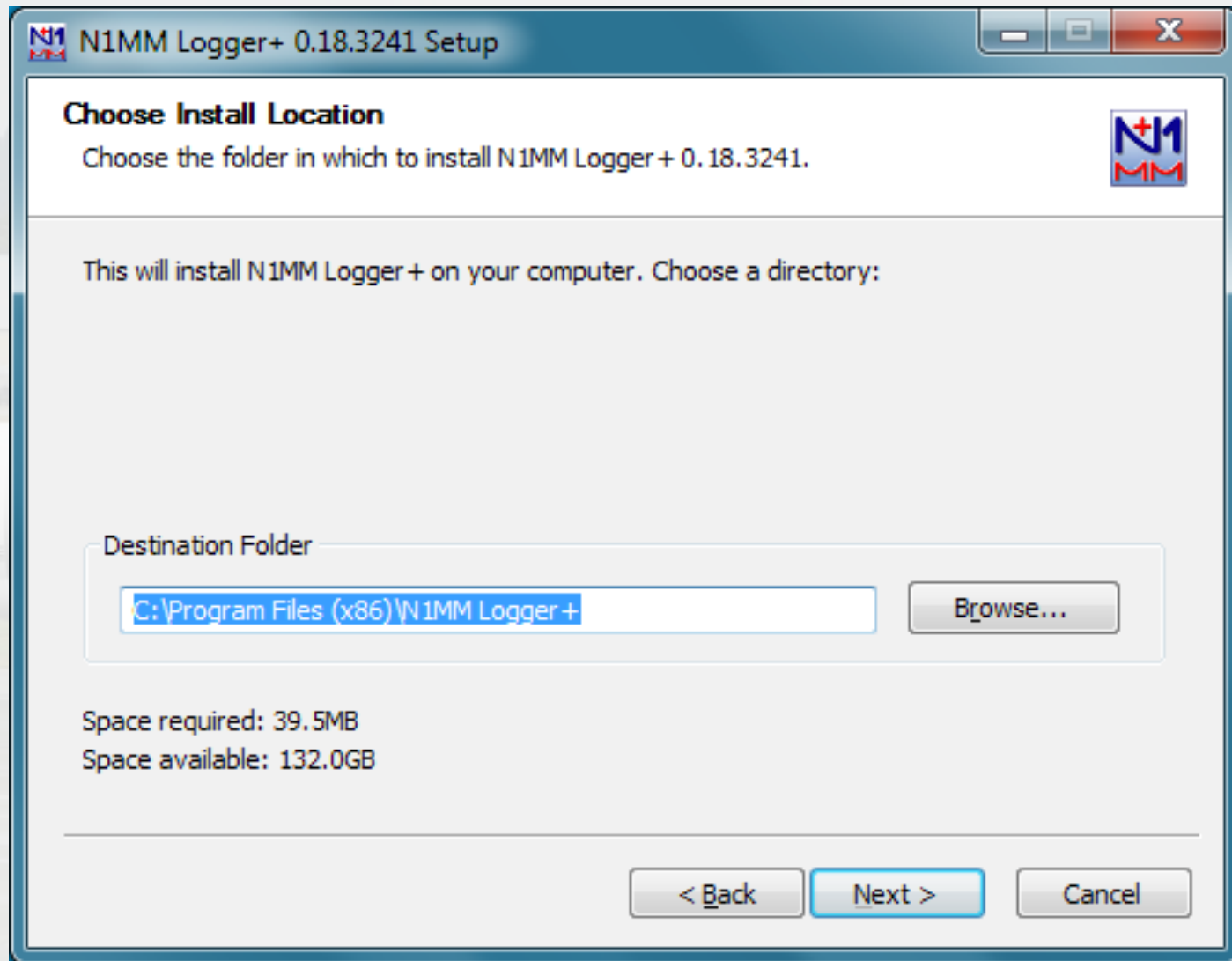
You will then see the licensing information window. Again click “Next”.



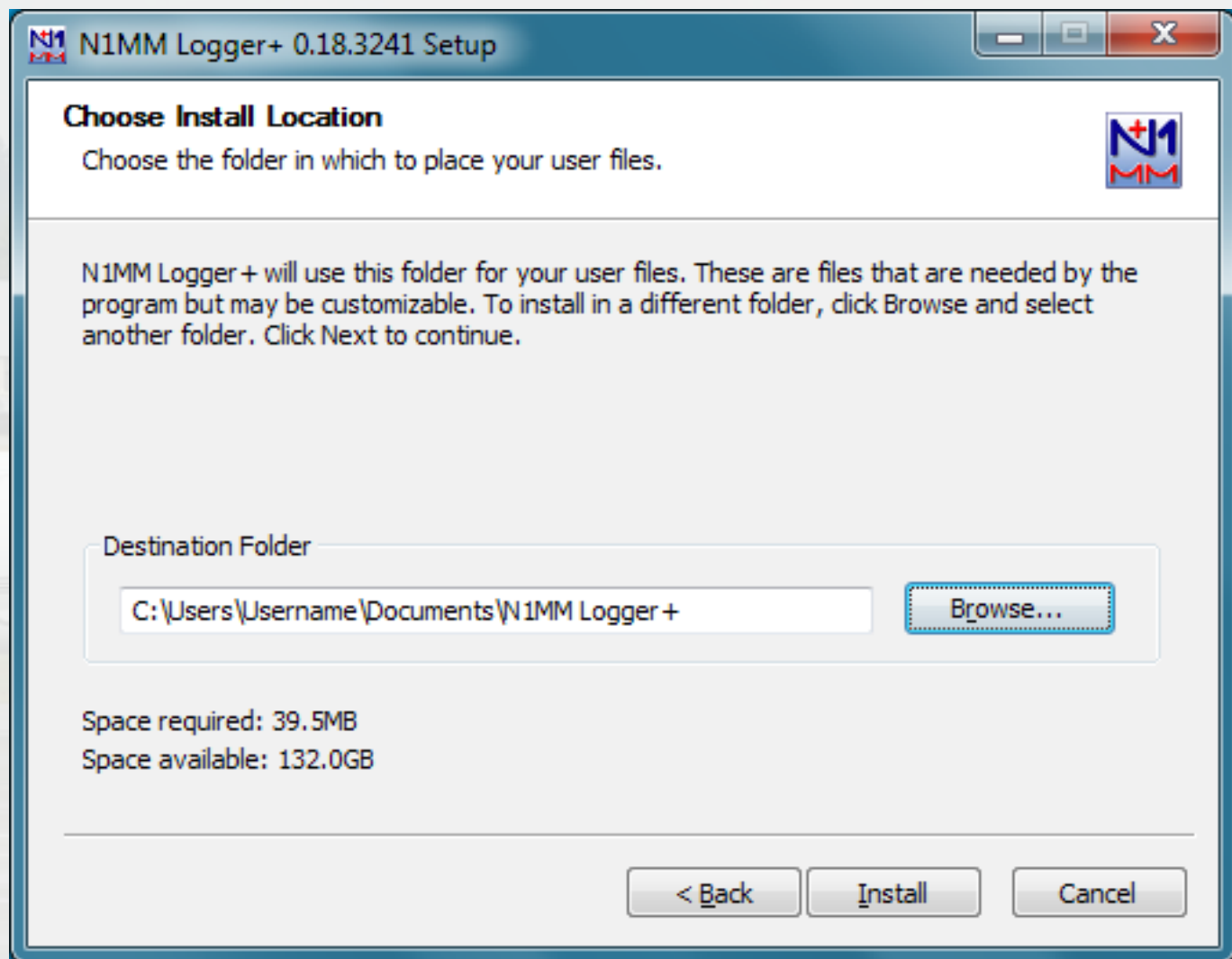
You will then see the “Choose Components” window. Again click “Next”.



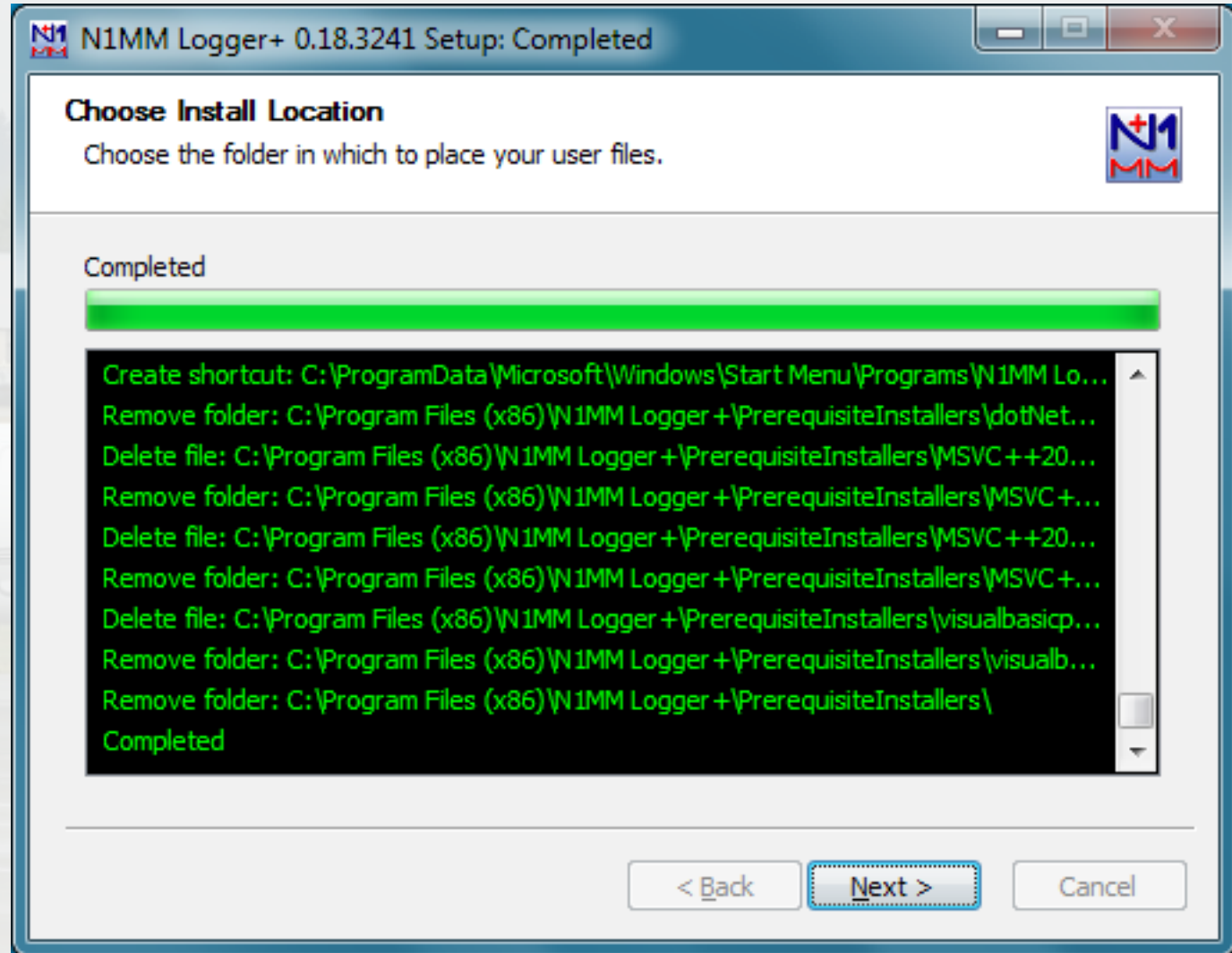
You will then see the “Choose Install Location” window, for the program files. Accept the default install location and again click “Next”.



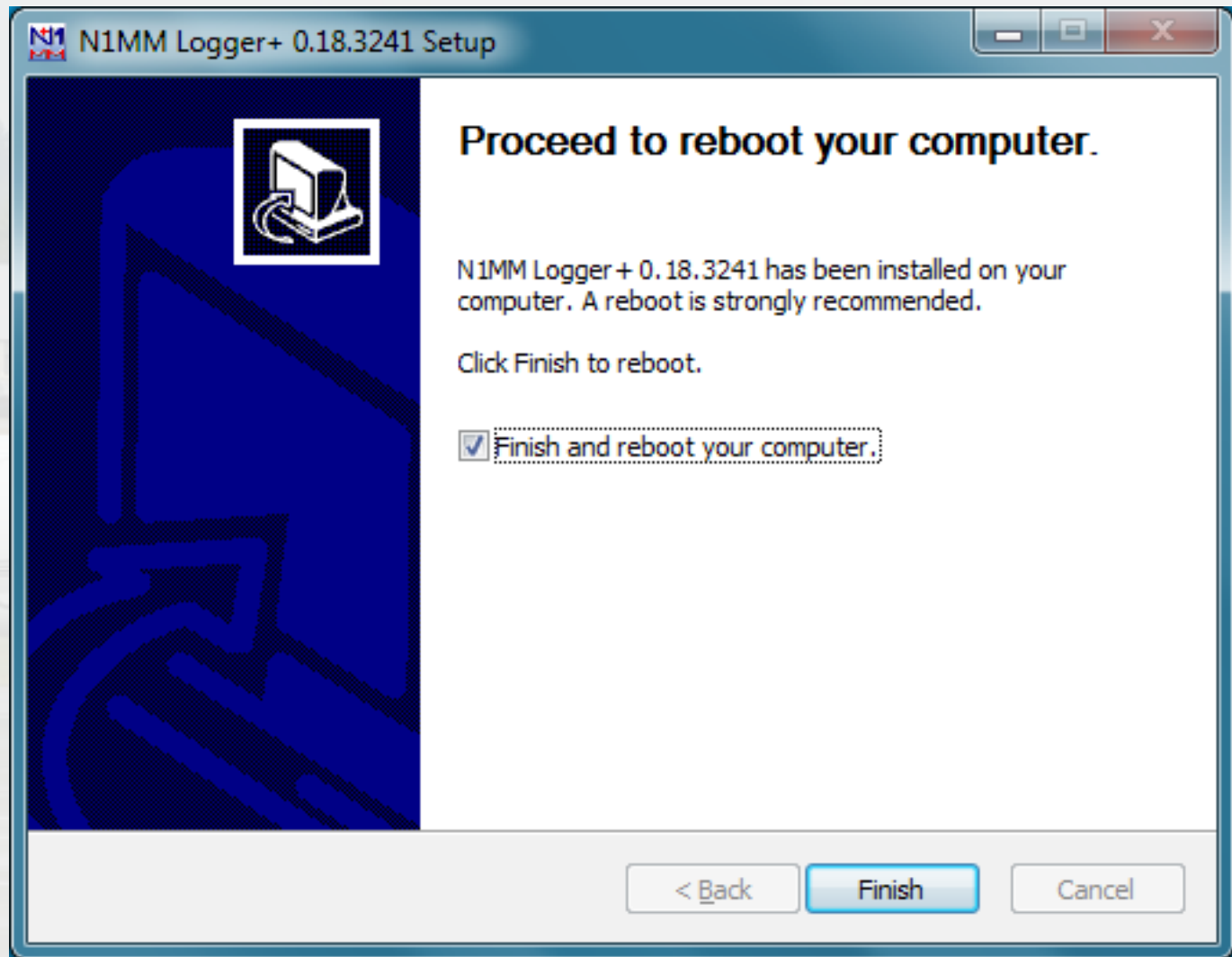
Next you will see the window for the Install Locations for User Files. Again, accept the defaults and then click “Install”.



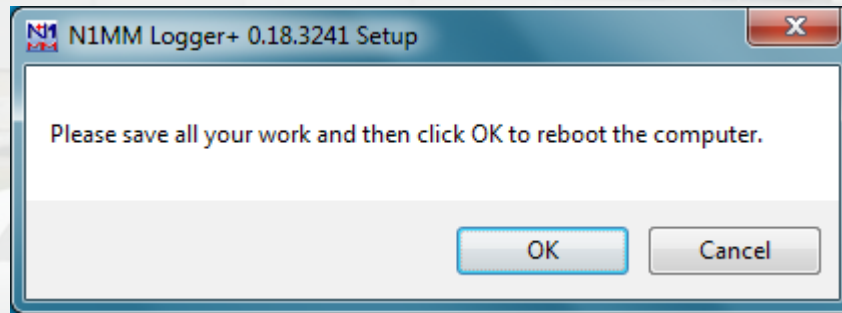
N1MM installation will now begin and you will see the following window. Once you see the text “Completed”, click “Next”. If you are asked at any point if you want to replace a newer file, say “No”.



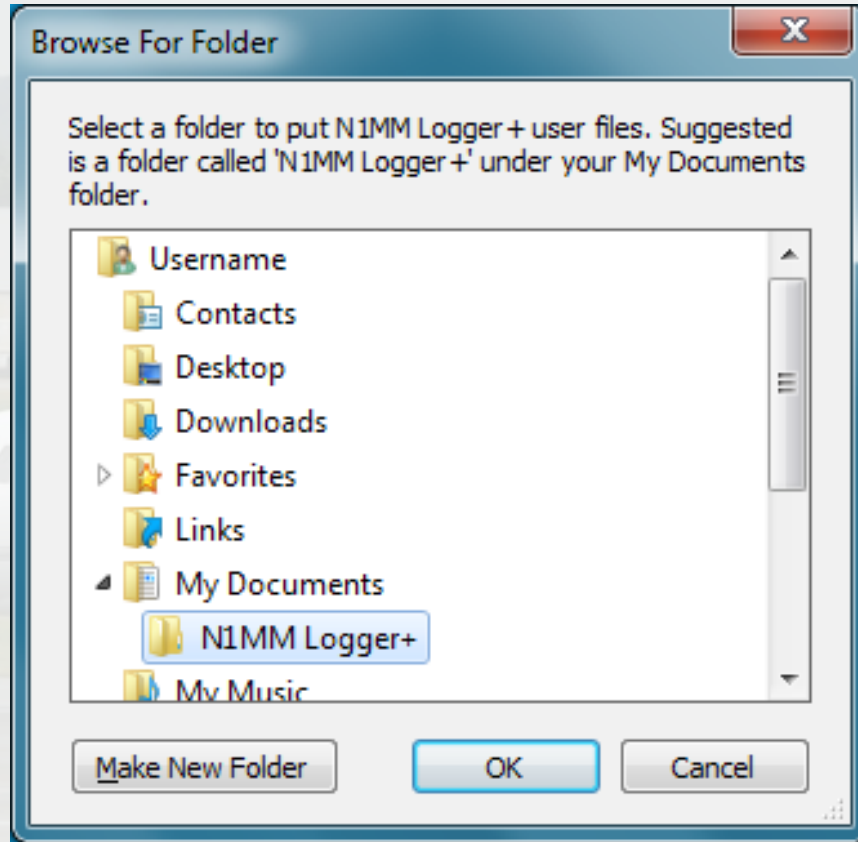
You will see the following window and be asked if you want to reboot your computer. Click "Finish".



Click “OK” on the window that pops up, to confirm that you want to reboot.

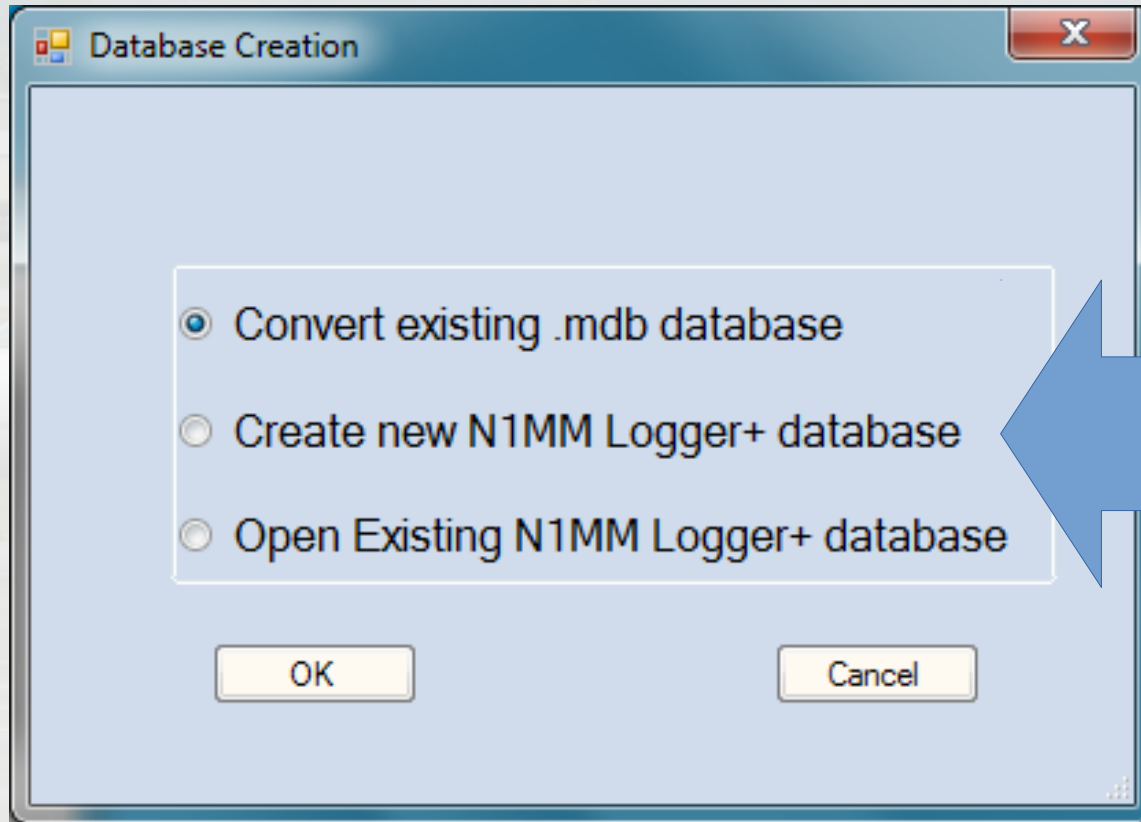


After the computer reboots, the installer will ask you where you want to put your N1MM User files, and then to set up an initial empty database and then to enter your station information into that database.

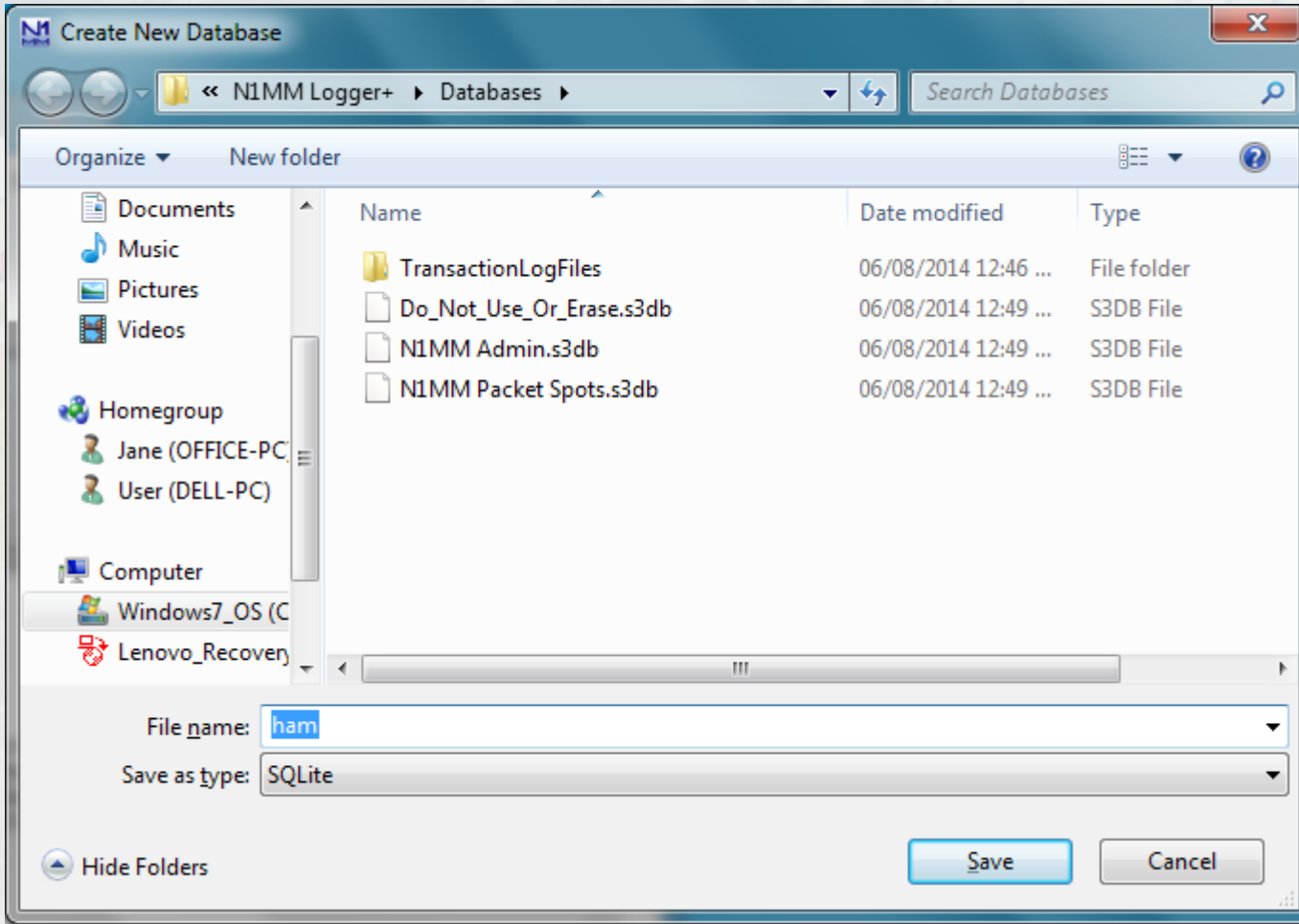


This location will be the “N1MM Logger+” folder in “My Documents”, if you chose the default file locations as suggested. Select this folder and then Click “OK”.

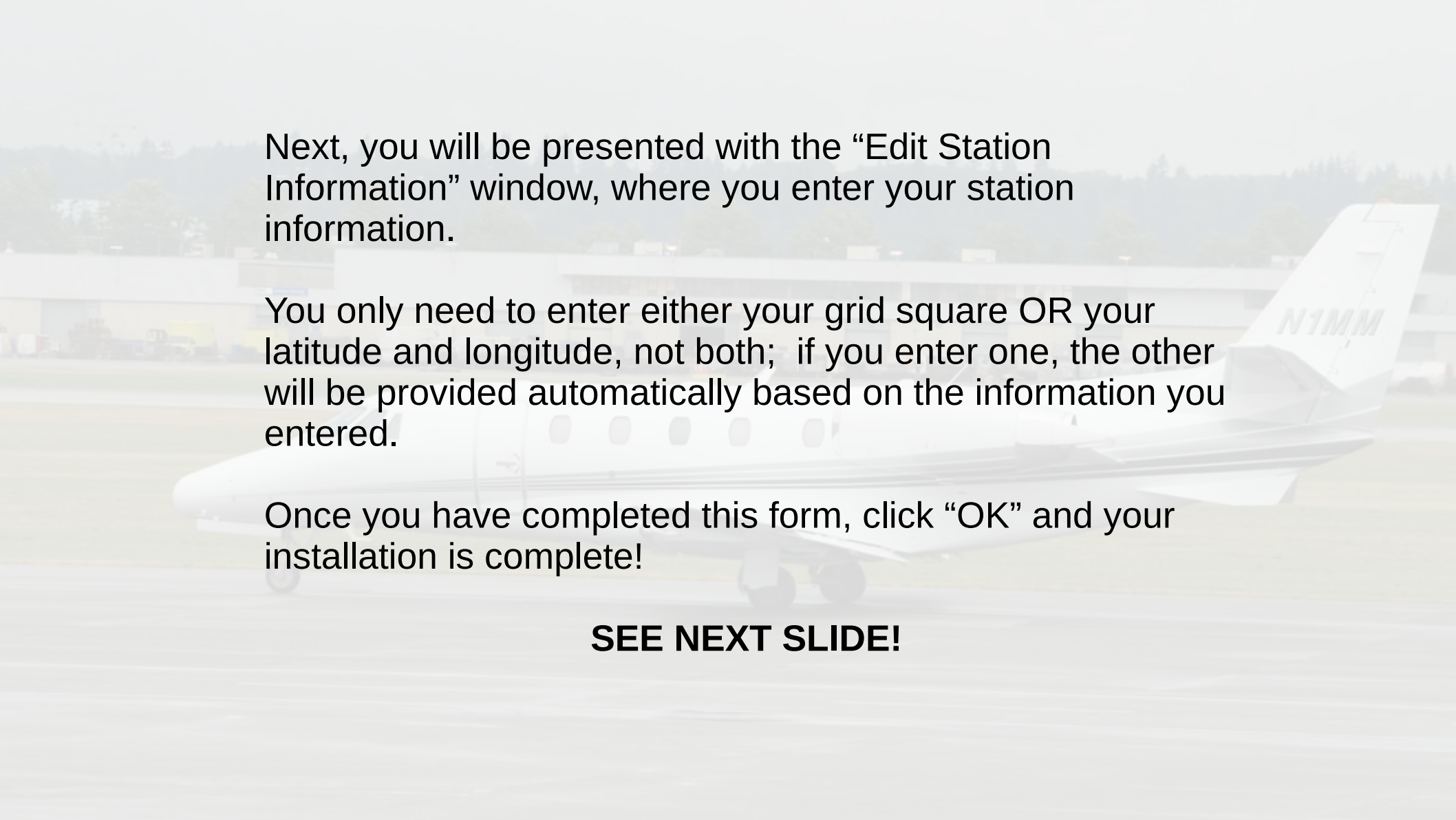
After you've specified the database location, you will be asked to create the new database. Select "Create new N1MM Logger+ database" and click "OK".



You will then be presented with the standard Windows File Dialog window, where you need to specify the name of the new database. The default name is “ham.s3db”. You can change “ham” to some other text, but you must NOT change the “s3db” file-type designation!



After naming the database file, click “Save”.

A faded background image of an airplane on a tarmac. The airplane is white with dark accents and has the registration number 'N1MM' visible on the tail. The background shows a hazy airport scene with buildings and trees.

Next, you will be presented with the “Edit Station Information” window, where you enter your station information.

You only need to enter either your grid square OR your latitude and longitude, not both; if you enter one, the other will be provided automatically based on the information you entered.

Once you have completed this form, click “OK” and your installation is complete!

SEE NEXT SLIDE!



Edit Station Information



Tip: You need to fill out this form or the program will not perform properly... Also, make sure your computer date and time are set to the LOCAL date and time zone for your location.

Call	<input type="text"/>				
Name	<input type="text"/>				
Address	<input type="text"/>				
Address	<input type="text"/>				
City	<input type="text"/>	State	<input type="text"/>	Zip	<input type="text"/>
Country	<input type="text"/>				
Grid Square	<input type="text" value="JJ00AA"/>	CQ Zone	<input type="text" value="0"/>	ITU Zone	<input type="text" value="0"/>
License	<input type="text"/>	Latitude	<input type="text" value="0.0000"/>	Longitude	<input type="text" value="0.0000"/>
Station TX/RX	<input type="text"/>	Power	<input type="text"/>		
Antenna	<input type="text"/>	Ant. Height	<input type="text"/>	a.s.l.	<input type="text"/>
ARRL Section	<input type="text"/>				
Rover QTH	<input type="text"/>				
Club	<input type="text"/>				
Email address	<input type="text" value="NoEmailProvided"/>				

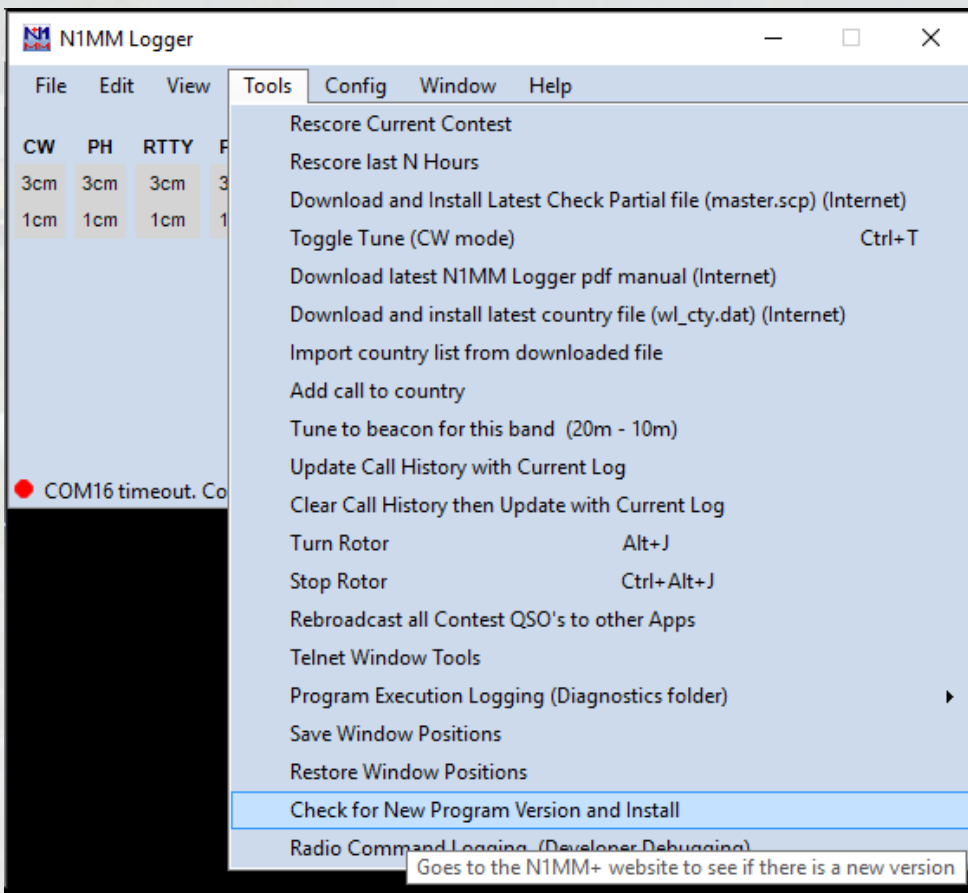
Ok

Help

Cancel

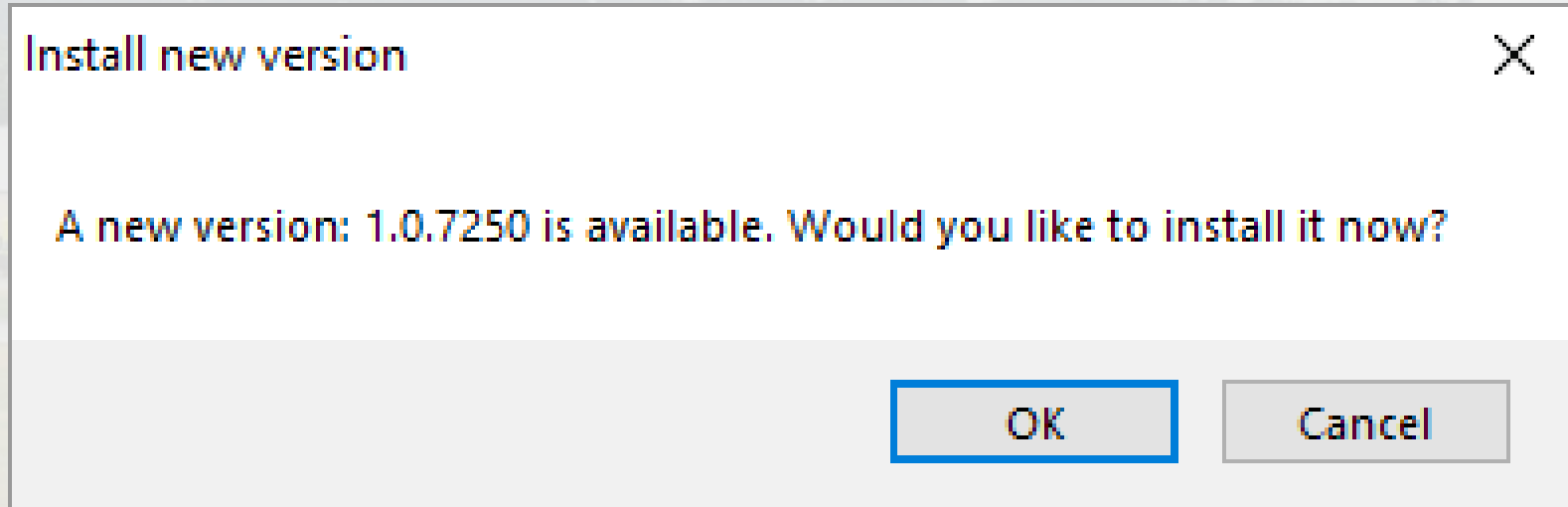
But Wait, There's More!

Install the latest N1MM Update



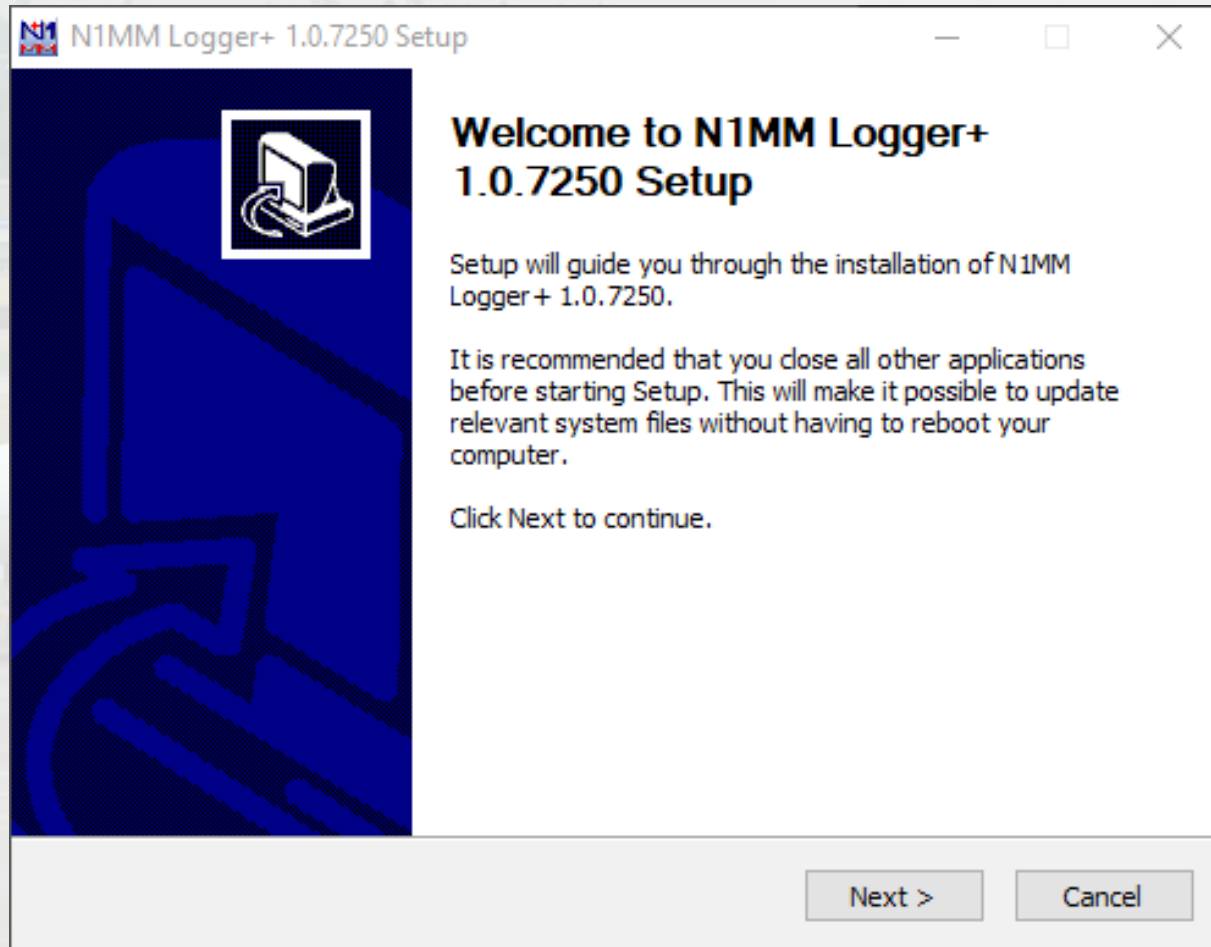
Start N1MM,
click “Tools”,
and then click
“Check for New
Program
Version and
Install”.

Click “OK” on the popup window that appears.

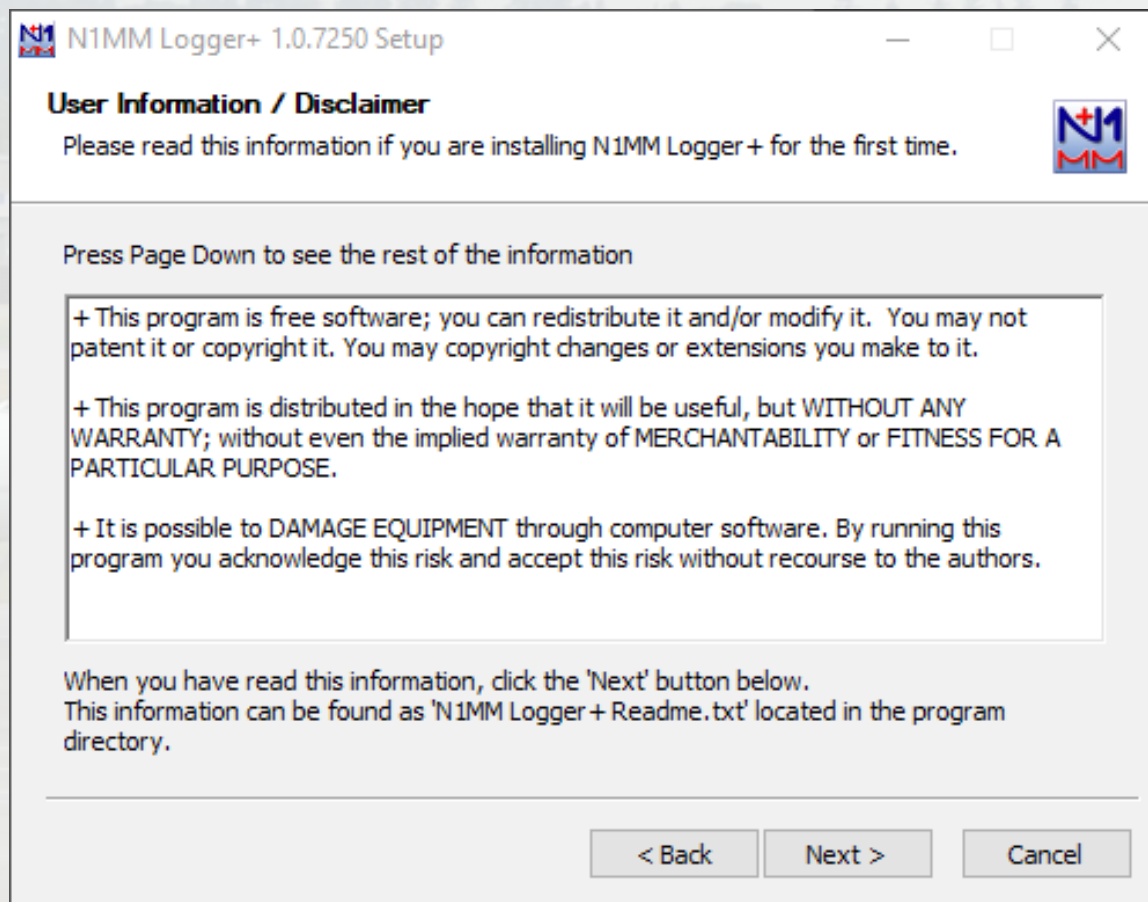


If there is a new N1MM version available, N1MM will download it and close N1MM. You will then get the standard Windows prompt asking you if it is OK to change. Answer “Yes”.

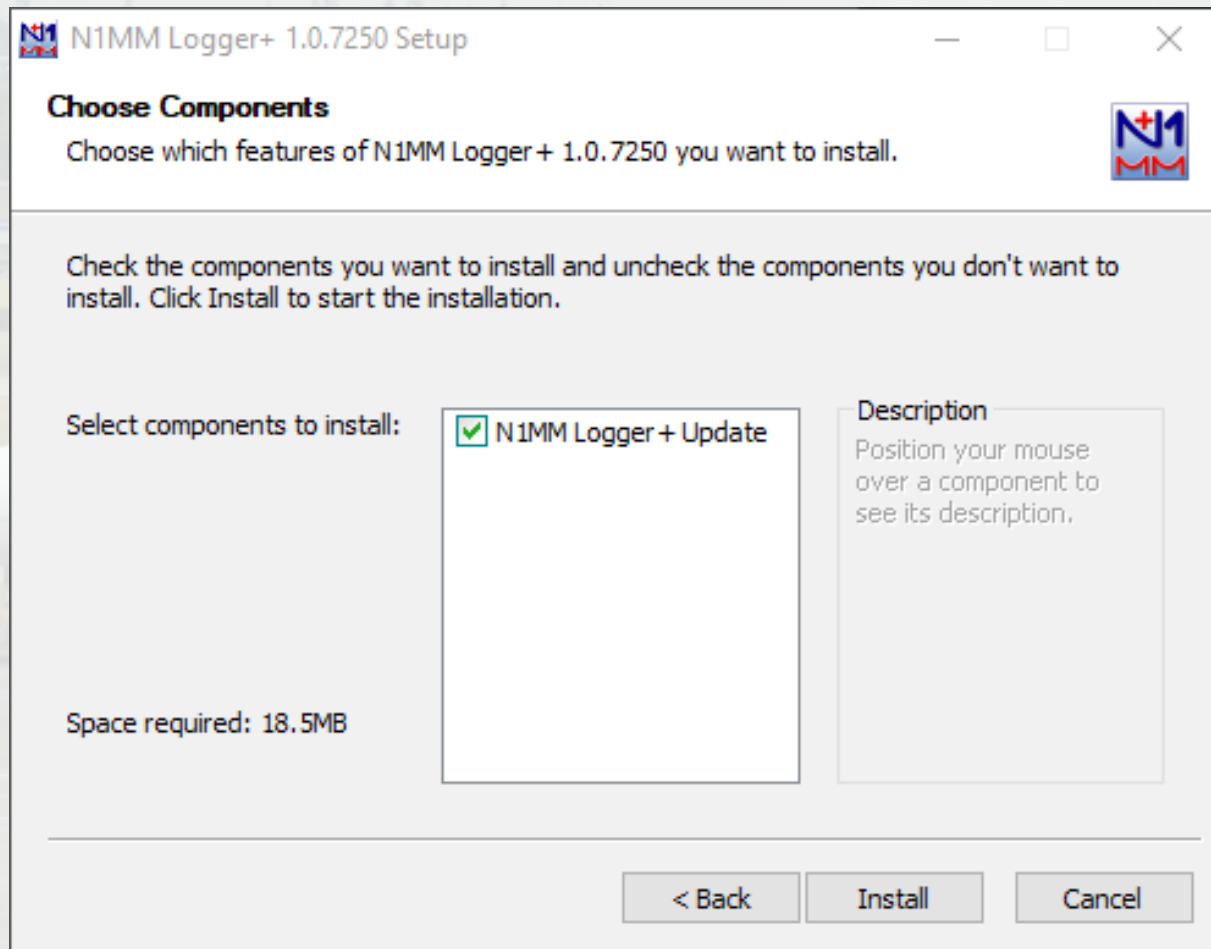
You will then see the “Welcome to N1MM Logger+ Setup” window. Click “Next”.



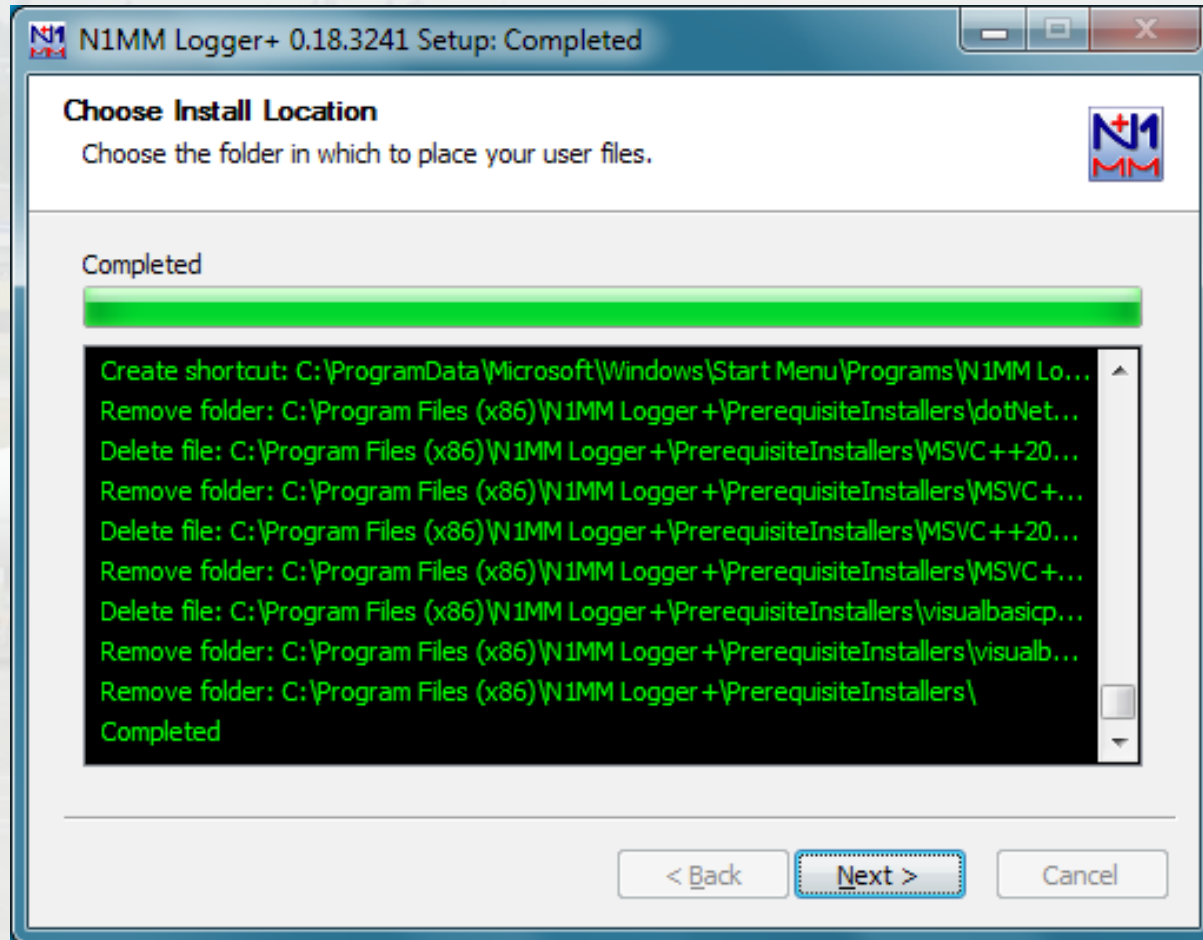
You will then see the same User Information window that you saw when doing the original installation. Again, click “Next”.



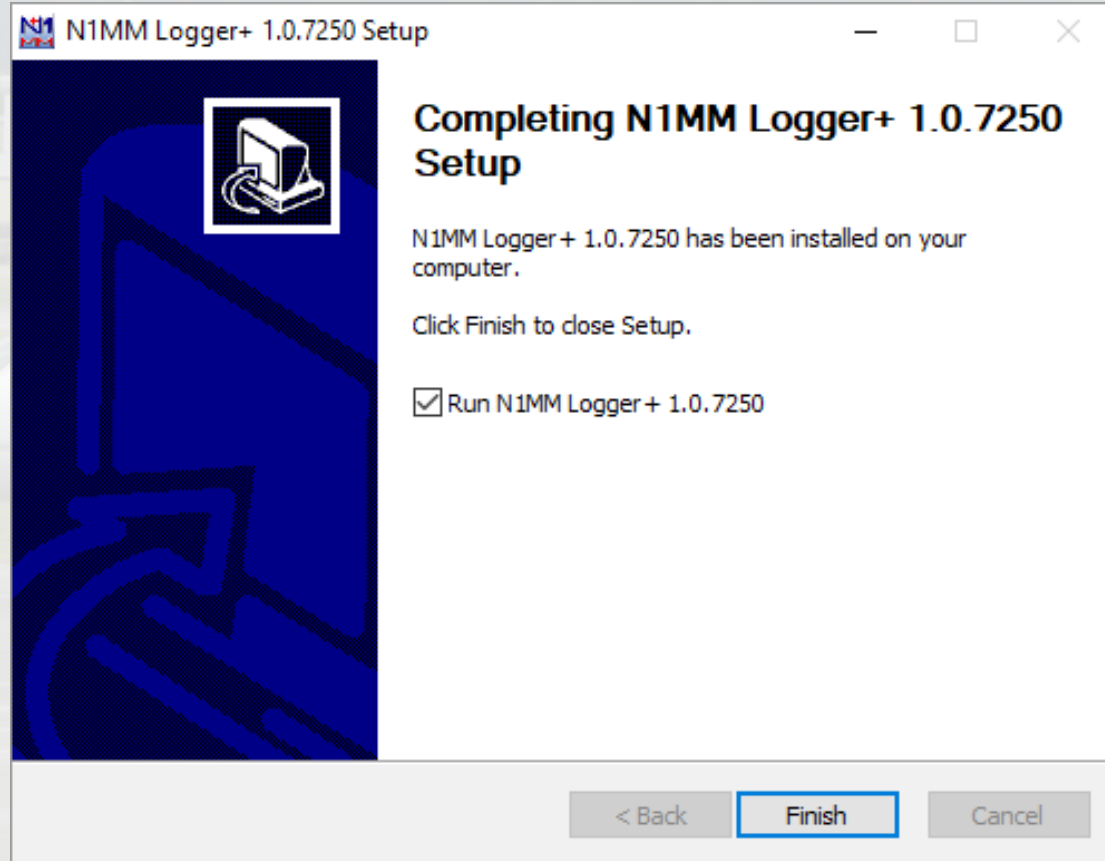
As before, this will bring up the “Choose Components” window. Again, accept the defaults and click “Install”.



This will bring up the install progress window. Once installation is complete, click “Next”



This will bring up the “Completing N1MM Logger+ Setup” window. Click “Finish”, and N1MM will restart.



Questions?

Problems?

Anything Not
Clear?

